

Integrated electrical switch for pneumatic and electric control of air seats

Permanent knob

Push-To-Connect fittings (PTC)

Technical data

Operating pressure:

0 to 200 psi (0 to 13 bar)

Actuation:

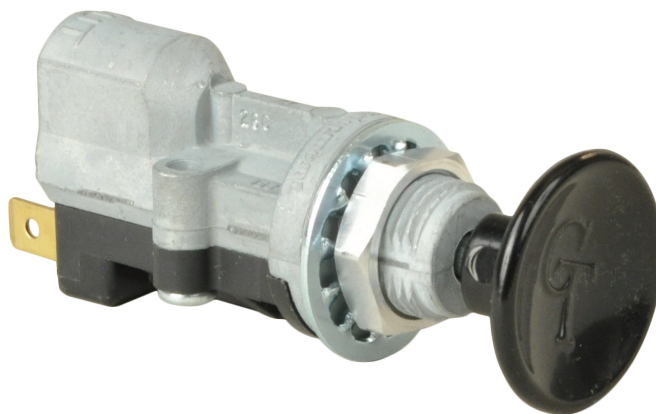
Push: Closes electrical switch. Approved for use with RDH Enterprises # 64-00450 12

Vdc compressor or equivalent

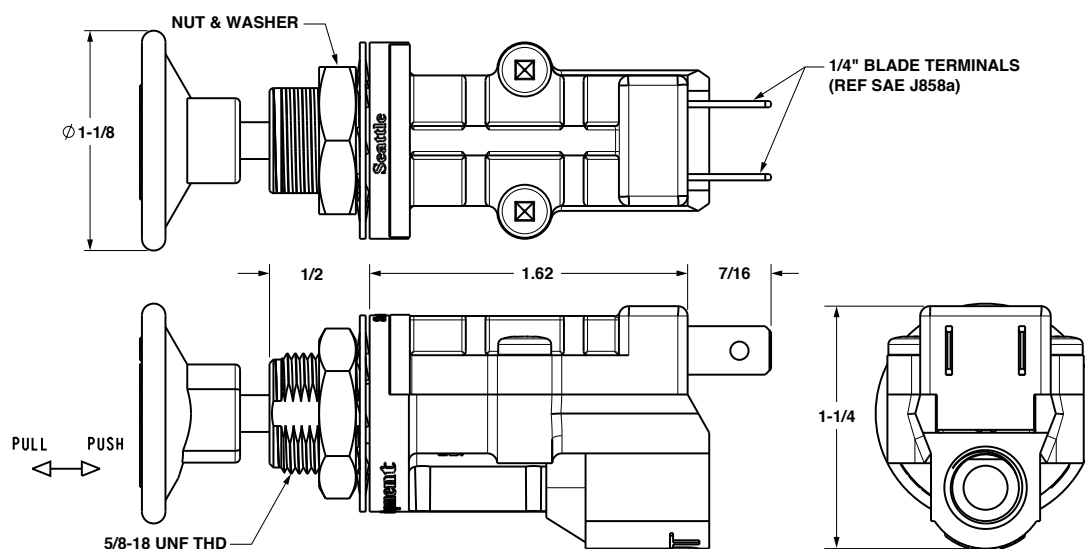
Pull: OUT port is vented to atmosphere

Tube O/D:

1/4"



Dimensions (Inches)



Models

Model		Tube O/D
3000	●	1/4"